



*To graduate all students prepared to  
succeed in a changing world.*

### **Canyon Crest Elementary School**

11851 Cherry Avenue  
Fontana, CA 92337-2792  
(909) 357-5440  
FAX (909) 357-5449

Preschool - Fifth Grade  
Kathleen M. Mouzakis  
Principal

[www.fontana.k12.ca.us](http://www.fontana.k12.ca.us)

### **Board of Education**

Laura Abernathy-Mancha,  
Board President

D. Wayne Ruble, Ed.D., Board Clerk

Kathy Binks, Board Member

Gus Hawthorn, Board Member

Rick McClure, Board Member

### **District Administration**

Karen J. Harshman, Ed.D.  
Superintendent of Schools

Emmanuel J. D'Souza  
Associate Superintendent, Business

Francesca Mazzolini  
Associate Superintendent, Education

Patricia J. Peoples, Ed.D.  
Associate Superintendent, Human  
Resources

## **Fontana Unified School District**

# **Canyon Crest Elementary**

## **2000-2001 Annual School Report Card**

### **A Message from the Superintendent**

The Mission of the Fontana Unified School District is to prepare all students to be successful in a changing world. Today, more than ever before, our focus is on ensuring academic success for all students.

The contents of the School Accountability Report Card provide information on each school's accomplishments by specific categories. The school and district are proud of the many accomplishments and recognize the need for constant review and improvement as necessary. It is our hope that you will find the information useful as all of us continue to enhance the program for students.

Karen J. Harshman, Ed.D.  
Superintendent of Schools

### **Principal's Message**

The purpose of the School Accountability Report Card is to provide parents and community members with information about the school's instructional programs, student achievement, and demographics.

Canyon Crest is a great school. We are very proud of our students and our programs. We believe that quality education for all students can be achieved through high standards for academic performance and behavior. We are fortunate to have strong family/school partnerships and a dedicated, enthusiastic staff who are committed to providing the best possible education for Canyon Crest students.

Canyon Crest is a multi-track, year-round school serving approximately 880 students in preschool through grade five. We enjoy a rich diverse population composed of 65% Hispanic, 16% African American, 15% European American and 4% other ethnic backgrounds. Our parents offer their time and talents through groups such as: Classroom Volunteers, English Language Learners Advisory Council, School Site Council, and PTA.

Scores on the statewide SAT-9 assessment continue to improve and an increase of 23 points on the Academic Performance Index was recorded for the 1999-2000 school year.

At Canyon Crest, we celebrate our successes and we recognize that we must continue to find strategies for improving academic achievement of ALL students. We are committed to this and hope to see continued growth. Parents and community members are welcome to visit Canyon Crest.

Sincerely,

Kathleen M. Mouzakis  
Principal

## Climate for Learning

Students at Canyon Crest Elementary are guided by specific rules and classroom expectations that promote respect, cooperation, courtesy, and acceptance of others. The school's discipline philosophy promotes a safe school, a warm, friendly classroom environment, and demonstrates that good discipline is a solid foundation on which to build an effective school. The school's policy is to counsel with students when a problem arises, to set limits if necessary, and to alert parents if the problem continues. Parents and students are informed of discipline policies at the beginning of each school year through classroom orientation and the school rules pamphlet which outlines student behavior expectations, and school and personal safety rules. In order to promote peer acceptance and limit potential distractions from classroom learning, Canyon Crest Elementary has adopted a uniform policy for both boys and girls, which is outlined in the school rules pamphlet.

Canyon Crest Elementary has not expelled any of its students during the past three years; expulsions occur only when required by law or when all other alternatives are exhausted.

Suspensions and Expulsions						
	Canyon Crest Elementary			All Fontana Elementary Schools		
	99	00	01	99	00	01
Suspensions (#)	0	32	35	738	439	688
Suspensions (%)	0.0	3.7	4.2	4.1	2.4	3.6
Expulsions (#)	0	0	0	0	3	4
Expulsions (%)	0.0	0.0	0.0	0.00	0.02	0.02

## Attendance

Regular attendance at Canyon Crest Elementary is a necessary part of the learning process and is critical to academic success. Attendance, tardy, and truancy policies are clearly stated, consistently enforced, and consequences fairly administered. Parents are advised of their responsibilities, including proper notification of when and why students are absent. The students of Canyon Crest Elementary are expected to be in their seats and ready for instruction at the designated time.

Fontana Unified School District's School Attendance Review Board (SARB) is composed of parents, representatives from the school district and members of the community, including representatives from law enforcement, welfare, probation and mental health. Students are referred to SARB when they have persistent attendance and behavior problems in school, and when the normal avenues of classroom, school and district counseling are not effective.

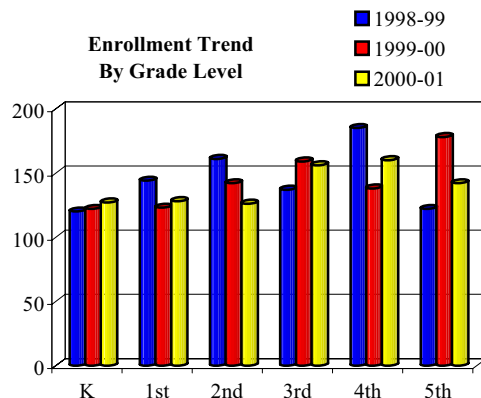
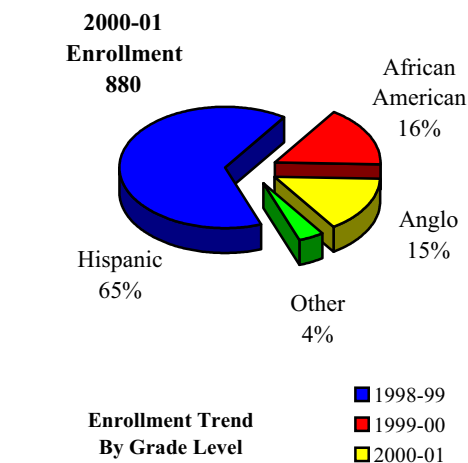
## Enrichment and Intervention

Students are encouraged to participate in the school's additional academic and extracurricular activities that are an integral part of the educational program. Activities and programs include:

- STARS Tutors
- Writing Celebration
- Fast ForWord
- Science Fair
- Chorus
- Spring Concert
- RAP - City of Fontana Recreation
- Gifted and Talented Education Program
- Birthday Book Club
- Penny a Book Program
- Meet the Masters Program
- Instrumental Music
- Mid-Winter Concert
- 4th/5th Grade PE Enrichment

## School Attendance

Student enrollment over the past three years at Canyon Crest Elementary has decreased by 3.5%. Schoolwide enrollment at the beginning of the 2000-01 school year was 839 students.



School districts receive financial support from the state for the education of the students they serve based on how many students attend each day. Most importantly, attendance is critical to academic achievement and regular daily attendance is a priority at Canyon Crest Elementary. Student attendance is carefully monitored to identify those students exhibiting excessive absences. During the 1999-00 and 2000-01 school years, the actual attendance rates for all grade levels for Canyon Crest Elementary were 94.45% and 94.61%, respectively.

In order to promote student attendance, the principal, assistant principal, and school counselor make phone calls to parents of students with attendance issues. In addition, Fontana Unified School District utilizes community liaisons who make home visits for students with chronic truancy issues.

### Class Size

Canyon Crest Elementary maintained a schoolwide average class size of 22.3 students and a pupil/teacher ratio of 21:1 for the 2000-01 school year. The pupil-to-teacher ratio varies by grade level taught.

Class Size Distribution											
Number of Classrooms by Size											
	Average Class Size			Classrooms containing							
				1-20 Students			21-32 Students				
	99	00	01	99	00	01	99	00	01		
Kind.	20	20	20	6	5	4	-	-	3		
1st	20	20	20	6	6	3	-	-	3		
2nd	20	20	21	6	6	0	-	-	6		
3rd	19	18	18	5	7	8	-	-	-		
4th	29	30	26	-	-	-	6	4	7		
5th	30	29	28	-	-	-	4	6	5		
K-3rd	19	20	*	4	4	-	-	-	-		
3rd-4th	19	18	*	1	1	-	-	-	-		

- No classrooms containing specified number of students  
\* No combined classrooms

In 1996, state legislature approved implementation of the Class Size Reduction (CSR) program that provides funding to hire additional teachers to assist schools in reducing K-3 class sizes. At the beginning of the 2000-01 school year 100% of all K-3 classrooms participated in this program.

### Instructional Minutes

During the 2000-01 school year, all instructional minutes offered at Canyon Crest Elementary either met or exceeded state requirements. Canyon Crest Elementary provides instruction for Kindergarten - Fifth Grade in a self-contained classroom environment, where students receive all instruction by a homeroom teacher. Fontana Unified School District's curriculum focus is on language arts and mathematics, and students receive ten hours of instruction in each of these areas per week. Students receive instruction in sci-

Instructional Minutes by Grade Level		
	Minutes Required	Average Minutes Tracks 1-4
K	36,000	36,050
1st-3rd	50,400	53,253
4th-5th	54,000	54,567

ence, social science, music, art, and physical education in the remaining time. Students in grades four and five receive additional specialized instruction in the areas of lab science, instrumental and vocal music, and physical education by appropriately credentialed teachers.

### Minimum Days

For the 2000-01 school year, Canyon Crest Elementary offered 175 days of instruction. Canyon Crest Elementary is a multi-track, year-round school, and each of four tracks 1, 2, 3, and 4, has its own

	School Days	
	Regular Days	Minimum Days
Track 1	131	44
Track 2	130	45
Track 3	133	42
Track 4	133	42

schedule of regular and minimum days. According to the California Education Code Section 37670.a, a school district with year-round schools may operate a program for as few as 163 days in each fiscal year as long as the instructional time meets California's grade level requirement. Canyon Crest Elementary utilizes minimum days for staff development, teacher preparation, and parent conferences.

### Textbooks & Instructional Materials

Fontana Unified School District sets a high priority upon ensuring that sufficient and current textbooks and materials are available to support the school's instructional program as well as provide students with their own textbooks. All textbooks and instructional materials used within the school are aligned with the California State Content Standards and Frameworks as well as the school's Curriculum Council standards.

A committee consisting of administrators and teachers establishes selection criteria based on state standards, reviews instructional materials on the state list, and makes recommendations to the Board of Education for final adoption. During the 2000-01 school year, the district received state instructional materials funding for the purchase of textbooks and supplemental materials. New textbooks and supplementary materials were purchased for kindergarten through third grades in language arts: Open Court Reading, published by SRA/McGraw-Hill.

Computer skills and concepts integrated throughout standard curriculum prepare students for technological growth and opportunities. Students receive computer-assisted instruction on a regular basis in the classroom.

## Student Achievement & Testing

Multiple measures of student achievement were used as an ongoing part of the quality instructional program at Canyon Crest Elementary. These measures were used to monitor students' actual progress as well as to evaluate the effectiveness of the instructional program.

District Language Arts and Math Assessments were given to students in kindergarten through fifth grade. During the 2000-01 school year, Language Arts assessments were given three times, and Math assessments were given four times. These were curriculum embedded tests, developed by the district, which were written to align with state and district standards.

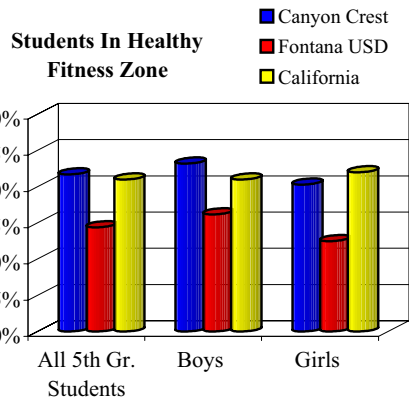
Using the results of district assessments, state assessments and student grades, Fontana Unified School District created a multiple measures matrix. This matrix was used to evaluate overall student progress, and to pinpoint at-risk students. The district and school then utilized various intervention programs for students who were below grade level.

### Standardized State Testing

Canyon Crest Elementary participates in California's mandatory Standardized Testing and Reporting Program (STAR) which utilizes the Stanford Achievement Test Series (SAT-9), California Standards Assessments, and the Spanish Assessment of Basic Education/2 (SABE/2). The SAT-9 measures achievement based on student comparison; the California Standards Tests aid in determining the level of individual student comprehension and knowledge of skills required by the California Content Standards for each grade or course.

### Physical Fitness

In the spring of each year, Canyon Crest Elementary is required by the state to administer a physical fitness test to all students in the fifth grade. The physical fitness test is a standardized evaluation that tracks the development of high-quality fitness programs and assists students in establishing physical activity as part of their daily lives. Results of student performance are compared to other students statewide who took the test.



The physical fitness test measures each student's ability to perform fitness tasks in six major areas; students are provided several options to perform tasks in each area. Students who either meet or exceed the standards in all six fitness areas are considered to be physically fit or in the 'healthy fitness zone' (HFZ).

### SAT-9 Results

1999, 2000, 2001

% At or Above National Average

All Students	Reading											
	2			3			4			5		
	99	00	01	99	00	01	99	00	01	99	00	01
Canyon Crest	45	34	25	33	37	34	39	34	40	44	35	35
Fontana USD	24	24	29	21	24	24	21	23	26	22	21	24
California	44	49	51	41	44	46	41	45	47	42	44	45

All Students	Math											
	2			3			4			5		
	99	00	01	99	00	01	99	00	01	99	00	01
Canyon Crest	41	53	46	39	51	57	36	43	53	55	52	53
Fontana USD	33	36	42	32	38	45	27	31	39	24	30	38
California	49	57	58	48	56	59	44	51	54	45	50	54

### SAT-9 Subgroup Results

2001

% At or Above 50th Percentile

Gender	Reading				Math			
	2	3	4	5	2	3	4	5
Male	24	32	38	28	55	59	53	56
Female	27	37	42	41	39	54	54	51

Ethnicity	Reading				Math			
	2	3	4	5	2	3	4	5
African American	21	19	42	25	41	31	52	39
Hispanic	25	36	34	32	44	59	54	53
Anglo	25	41	50	64	50	55	53	61

Language Fluency	Reading				Math			
	2	3	4	5	2	3	4	5
English Learner (EL)	16	10	17	13	34	42	42	36
Non EL	29	41	45	40	50	61	55	57

Socioeconomic Status	Reading				Math			
	2	3	4	5	2	3	4	5
SED	24	35	41	35	45	58	54	56
Non SED	28	34	40	36	48	55	52	50

Migrant Education	No Data Reported							
-------------------	------------------	--	--	--	--	--	--	--

SED = Socioeconomically Disadvantaged

### California Standards Results

% of Students Scoring At or Above Standards (Proficient and Advanced)

2001

All Students	English/Language Arts			
	2	3	4	5
Canyon Crest	13	14	20	14
Fontana USD	13	12	14	11
California	32	30	33	28

Subgroups	English/Language Arts			
	2	3	4	5
Gender				
Male	15	11	20	14
Female	13	17	20	16
Ethnicity	<i>Data currently unavailable.</i>			
Language Fluency				
English Learners (EL)	6	3	8	0
Non EL	16	17	22	18
Migrant Education	<i>Data currently unavailable.</i>			
Socioeconomic Status				
SED	12	11	21	9
Non SED	16	17	19	21

SED = Socioeconomically Disadvantaged

## Academic Performance Index

The Academic Performance Index (API) is one of three components of the Public Schools Accountability Act (PSAA) passed in 1999. The API measures school performance, sets academic growth targets, and monitors growth over time based on SAT-9 results. If a school meets its growth targets, including subgroup targets, it may be eligible to receive monetary and non-monetary awards.

The percent tested is calculated by dividing the number of students tested by enrollment in grades tested as indicated in the October CBEDS School Information Form. The API scale is 200-1000, calculations for which only include scores for students in the district the prior school year. Rankings are presented in deciles (high of 10, low of 1), each of which contains 10% of all schools. The growth target is equal to 5% of the difference between the 2000 API and the interim State-wide Performance Target of 800.

The Immediate Intervention/Underperforming School's Program and the Governor's Performance Award Program are the two remaining components of the PSA Act. Due to specific criteria, including API and SAT-9 results, Canyon Crest Elementary qualified to participate in the 2000-01 Governor's Performance Award program which allocates up to \$150 per pupil for schoolwide use.

Canyon Crest API School Results					
All Students Base	Base		Growth	Growth	
	1999	2000		1999	2000
Percent Tested	100	99	Percent Tested	99	99
API Score	596	619	API Growth Score	619	634
Growth Target	10	9	Actual Growth	23	15
Statewide Rank	5	4	Eligible for Awards	No	Yes
Similar Schools Rank	7	5	Eligible for II/USP	No	No
<b>Subgroups</b>					
African-American					
Base API Score	511	505	API Growth Score	505	505
Growth Target	8	7	Actual Growth	-6	0
Hispanic or Latino					
Base API Score	564	611	API Growth Score	611	620
Growth Target	8	7	Actual Growth	47	9
Anglo					
Base API Score	680	695	API Growth Score	695	715
Growth Target	8	7	Actual Growth	15	20
Socioeconomically Disadvantaged					
Base API Score	0	581	API Growth Score	0	632
Growth Target	0	7	Actual Growth	0	51
<i>Only numerically significant subgroups for each reporting period are required to be presented in this report card. Numerically significant subgroups are comprised of (1) at least 100 students with valid test scores or (2) at least 15% of the school population tested and contains at least 30 students with valid scores.</i>					

## School Facilities & Safety

Canyon Crest Elementary provides a safe, clean environment for students, staff, and volunteers. School facilities were built in 1992, and include the library and media center, multi-purpose room, staff lounge, administrative offices, playground areas, and 31 classrooms which are all up-to-date and provide adequate space for students and staff. The campus is undergoing several upgrade projects that will be completed in the Spring of 2002:

- New parking lot on south and west sides of school
- New phone system
- Internet connections in all classrooms
- Cable TV access in all classrooms

In the late afternoons and evenings, a team of 180 custodial staff throughout the district ensures that classrooms, restrooms, and campus grounds are kept clean and safe. Removal of graffiti takes place prior to the start of school and repair of necessary facilities are prioritized accordingly. All electrical, plumbing, roofing and fixtures are in good working condition and meet applicable building and government code requirements. A scheduled maintenance program is administered by Fontana Unified School District to ensure that all classrooms and facilities are maintained to a degree of adequacy that provides for good learning.

Safety of students and staff is a primary concern at Canyon Crest Elementary. The school is in compliance with all laws, rules, and regulations pertaining to hazardous materials and state earthquake standards. The school's disaster preparedness plan includes steps for ensuring student and staff safety during a disaster. Fire and disaster drills are conducted on a regular basis throughout the school year.

In 1998, the comprehensive Safe School Plan was developed by the Safe Schools' Committee and the Office of Child Welfare and Attendance to comply with Senate Bill 187 of 1997. The plan provides students and staff a means of ensuring a safe and orderly learning environment. Highlights of the Safe School Plan include the following:

- Safe Schools' Plan of Action
- Comprehensive disaster and crisis plan
- State and local discipline policies
- Intervention programs for at-risk students
- Addressing student aggression
- Visible authoritative presence on campus
- Safe transportation
- Communication strategies
- Conflict resolution

The Safe Schools' Committee and the Office of Child Welfare evaluate the plan annually and update the plan as needed. The plan was last updated in Fall of 2001 and was reviewed with the staff at that time. An updated copy is available to the public at the school office.

## Counseling & Other Support Services

It is the goal of Canyon Crest Elementary to assist students in their social and personal development as well as academics. The school and district provide special attention to students who experience achievement problems, difficulty coping with personal and family problems, trouble with decision making, or handling peer pressure. The principal coordinates the counseling and support services at each school site.

The school employs the following counseling and support services staff to support students in their physical, emotional, and intellectual well-being: Health Aide (1 FTE), Nurse (0.2 FTE), Psychologist (0.2-0.4 FTE), and Speech/Language Specialist (0.6 FTE). Canyon Crest Elementary added a counselor to the support staff during the 2001-02 school year.

## Community Resources

The school uses all available resources in the community to assist students in their emotional and academic development. Canyon Crest Elementary works with the following as needed:

- San Bernardino County Department of Mental Health
- Fontana Unified School District Police Department
- City of Fontana Police Department
- Healthy Start
- Child Protective Services
- DARE Program

## Teacher Assignment

Fontana Unified School District recruits and employs the most qualified credentialed teachers. For the 2000-01 school year, Canyon Crest Elementary had 35 fully credentialed teachers who met all credential requirements in accordance with State of California.

Canyon Crest Elementary supports efforts made by teachers and other certificated school staff in attaining additional education and training through local

colleges and universities for their personal growth as well as for the benefit of the school. During the 2000-01 school year, certificated staff consisted of 43 employees: 41.9 percent with 30+ additional units beyond their bachelor's degree and 41.8 percent holding advanced graduate

Teacher Credential Status			
	99	00	01
Fully Credentialed	34	33	35
Emergency Credentials	5	7	5
Waiver	2	2	1
<b>Total Teachers</b>	<b>41</b>	<b>42</b>	<b>41</b>
Working Outside Subject	0	0	0
Average Years Teaching	9.1	8.9	10.4
Average Years in District	6.3	6.3	7.6

degrees such as a masters or doctorate degree. Specially trained staff who provide additional instruction or services include:

- Assistant Principal (1 full-time)
- Resource Specialist (1 full-time)
- Resource Specialist Aide (1 full-time)
- Special Day Class Teacher ( full-time)
- Special Day Class Aide (1 full-time)
- Teacher for the Severely Handicapped (1 full-time)
- Aide for the Severely Handicapped (1 full-time)
- Library Specialist (1 full-time)
- English Language Learners Aide (1 full-time)
- Adaptive Physical Education Specialist (1 part-time)
- Site Literacy Leader (1 full-time)
- STARS Tutors (4 part-time)
- Music Teacher (2 part-time)

## Teacher Evaluation & Professional Development

A constructive evaluation process promotes quality instruction and is a fundamental element in a sound educational program. Evaluations and formal observations are designed to encourage common goals and to comply with the state's evaluation criteria and district policies. Temporary and probationary teachers are evaluated annually and tenured teachers are evaluated every other year. Evaluations are conducted by the principal and vice principal; these administrators have been trained and certified for competency to perform teacher evaluations.

Staff members build teaching skills and concepts through participation in conferences and workshops throughout the year. The district offers staff development days annually where teachers are offered a broad based variety of professional growth opportunities in curriculum and instructional strategies. Staff at Canyon Crest Elementary have the option to participate in three staff development days each year.

## Substitute Teachers

The district currently has a pool of 250 substitute teachers. Most substitute teachers have a Bachelor's degree or at least 90 units toward a Bachelor's degree, and have passed the CBEST test. Periodically, Canyon Crest Elementary has difficulty in obtaining qualified substitute teachers from the district's pool. In the event a substitute teacher is not available for an absent teacher, students of the absent teacher are sent to other classrooms in the same grade level for instruction.

## Training & Curriculum Improvement

All training and curriculum development at Canyon Crest Elementary revolves around the California State Content Standards and Frameworks. Teachers align classroom cur-

riculum to ensure that all students either meet or exceed state proficiency levels. The writing and implementation of Canyon Crest Elementary's curriculum is an ongoing process. The school's curriculum guides are updated regularly to align with the state standards, district goals, and the statewide assessment program.

In 2000-01, Fontana Unified School District developed and adopted a standards-based report card. As all curriculum at elementary schools is aligned with the state standards, the standards-based report card gives parents a clear message about how their children are performing in relation to the state standards. The report card defines subject areas by curriculum and content standards. Numerical levels are used indicate the child's level of performance in each standards area, in addition to an overall letter grade. Work habits and social skills are graded in a separate section.

A districtwide Adoption Committee consisting of parents, teachers and administrators is responsible for evaluating and selecting new textbooks and developing curriculum based on the textbook selections. Approximately two teachers from each elementary school in the district field test new textbooks and write the corresponding curriculum. In 2000-01, the Open Court Reading program was implemented for grades kindergarten through third. The district offered teacher training through literacy camps and staff development days for this new program.

Fontana Unified School District offers several programs to support new and veteran teachers including the Beginning Teacher Support and Assistance (BTSA) program and the Peer Assistance and Review (PAR) program, which are designed to improve the education for students and increase the classroom performance of teachers, targeting both new and veteran teachers. Canyon Crest Elementary teachers utilize these programs with the goal of accomplishing the highest level of success for students and teachers. In addition to teacher support, all staff are encouraged to attend workshops and conferences. During the 2000-01 school year topics for staff development included:

- Writing Process - Traits of Writing
- Reading Comprehension
- Diversity
- Parent Involvement

For the 2001-02 school year, staff at Canyon Crest Elementary will continue to make a strong commitment to providing guidance for all staff in an effort to develop an instructional program that fosters creativity and academic excellence.

### **Special Programs**

Canyon Crest Elementary implemented the Fast ForWord language development program in 2000-01 to help low performing students develop better language skills. Fast ForWord, created by the Scientific Learning Corporation,

rapidly builds oral language skills by retraining the brain to discriminate sounds and process language more rapidly. In addition to Fast ForWord Canyon Crest Elementary offers several intervention programs for students who are struggling to meet grade level, students at risk, or who have special challenges.

- Site Literacy Leader small group reading skills
- STARS tutoring
- After-school tutoring
- English Language Acquisition Program (ELAP)
- English Language Learners Aides in the classroom
- Off-track Intercessions in language arts and math

The district's Special Education program addresses the needs of those students with special needs through appropriate assessment, identification of problem areas, placement, program implementation, evaluation, and review. A team consisting of the parent, school administrator, general education teacher, and special education teacher develop an Individual Education Plan (IEP) for each student in the Special Education program. The IEP defines what level of services a child will receive, whether it is additional support in the general classroom, or special reinforcement and development of concepts instruction conducted for a portion of the school day outside of the general classroom. Every school has a Special Education Review Team (SERT) which monitors the intake and exit of each student in the program, and a student's overall progress through the program.

### **Quality of Instruction & Leadership**

Leadership at Canyon Crest Elementary is a responsibility shared between district administration, the principal, instructional staff, students, and parents. Overall administration of the school activities, teacher evaluations, and daily operations are only a few of the many responsibilities under taken by Canyon Crest Elementary's principal. Working closely with teachers and staff, the principal leads the school's efforts to offer a well-balanced and rigorous core curriculum aligned with state and district standards.

Staff members and parents participate on various committees that make decisions regarding the priorities and direction of the educational plan to ensure instructional programs are consistent with students' needs and comply with district goals.

- School Site Council
- District School Site Council
- English Language Learners Advisory Committee (ELAC)
- District ELAC
- Parent Teacher Association
- Student Study Teams
- Individual Education Plan (IEP) Teams

The School Site Council, consisting of school staff and parents, is a major governing body that meets regularly to address programs and components that make up the school, to discuss the effectiveness and appropriateness of the various programs and components relative to the goals of the school, and to act as a communication liaison between the community and the school.

### Expenditures & Services Funded

For the 1999-00 school year, Fontana Unified School District spent an average of \$5,542 to educate each student (based on 1999-00 audited financial statements). The figures shown in the table below reflect the direct cost of educational services, per ADA, excluding food services, facilities acquisition and construction, and certain other expenditures. This calculation is required by law annually and compared with other districts statewide.

Expenses Related to Instruction Per Student* 1999-00		
Statewide Average		
Fontana USD	All Unified Districts	All Districts
\$5,542	\$5,758	\$5,705

*\*Ed-Data and California Department of Education, School Fiscal Services Division - J-200 Reports.*

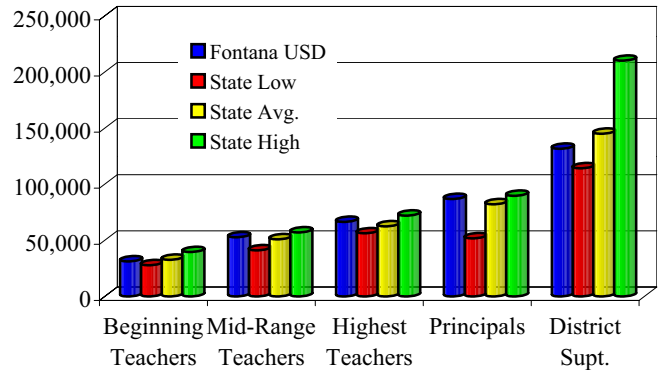
In addition to general fund state funding, Fontana Unified School District receives state and federal categorical funding for special programs. For the 1999-00 school year, the district received approximately \$1,594 per student in federal and state aid for the following categorical, special education, and support programs:

- Title I
- Joint Training Partnership Act
- Special Education
- Eisenhower Math and Science
- Drug/Alcohol/Tobacco
- Vocational and Applied Technology
- Regional Occupational Program
- Gifted and Talented Pupils
- Home to School Transportation
- School Improvement Program
- Economic Impact Aid
- Special Education Transportation
- Basic Reading Act
- Demo Programs for Reading and Math
- Vocational Education, Handicapped Students
- Educational Technology Assistance
- Year Round School Incentive
- Healthy Start

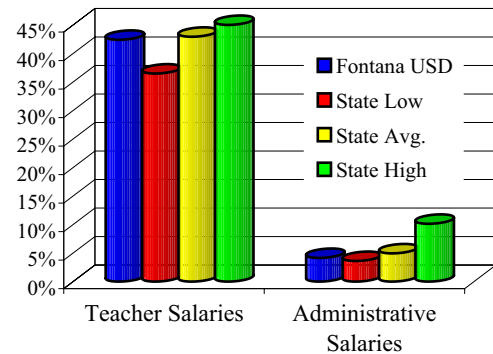
### Salary & Budget Comparison

State law requires comparative salary and budget information to be reported to the general public. For comparison purposes, the State Department of Education has provided average salary data from school districts having more than 20,000 average daily attendance throughout the state.

**Average Salary Information  
Teachers - Principals - Superintendent  
1999-00**



**Percentage of Budget  
Teacher and Administrative Salaries  
1999-00**



### Contact Information

Parents who wish to participate in Canyon Crest Elementary's leadership teams, school committees, school activities, or become a volunteer may contact the principal or school office at (909) 357-5440.

Fontana Unified School District's website provides a variety of resources and information for parents, staff, students and community members.

[www.fontana.k12.ca.us](http://www.fontana.k12.ca.us)