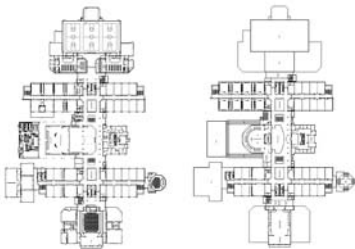


PLANNING,



DESIGN,



CONSTRUCTION



Contacts

FACILITIES:
 Melinda A. Pure—(909) 357-5000, x7047

FONTANA UNIFIED SCHOOL DISTRICT



www.fusd.net

9680 Citrus Avenue
 Fontana, CA 92335

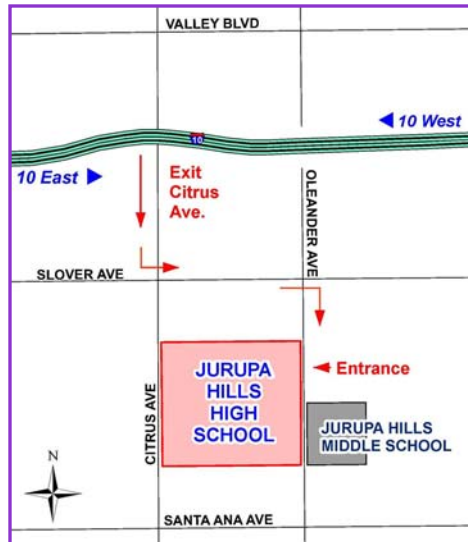
BOARD OF EDUCATION

- Kathy Binks
- Larry J. Clark
- Gus Hawthorn
- Laura Abernathy Mancha
- Julie A. Ramos

SUPERINTENDENT

Jane D. Smith

JURUPA HILLS HS MAP



FONTANA UNIFIED SCHOOL DISTRICT

JURUPA HILLS HIGH SCHOOL



**10700 OLEANDER AVENUE
 FONTANA, CA 92337**



JURUPA HILLS HIGH SCHOOL

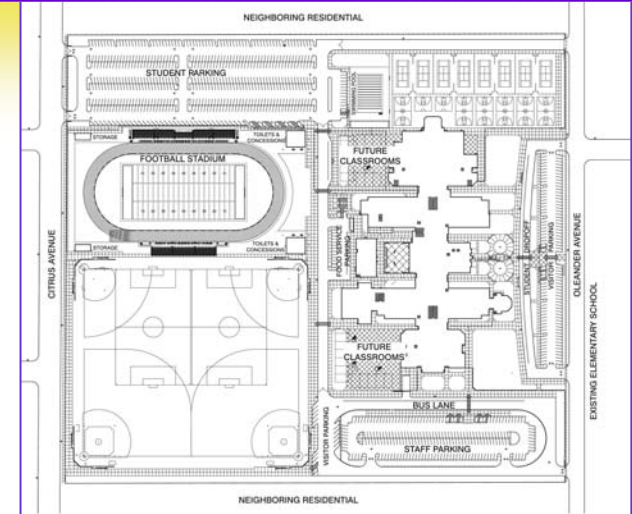
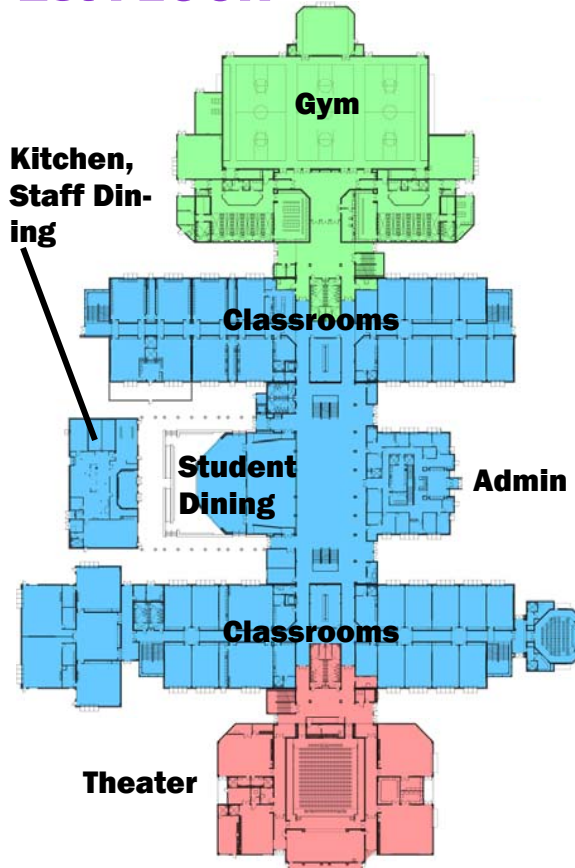
Architect:
WLC Architects
Construction Manager:
Neff Construction
Groundbreaking:
May 7, 2008

Opening Date: 2010

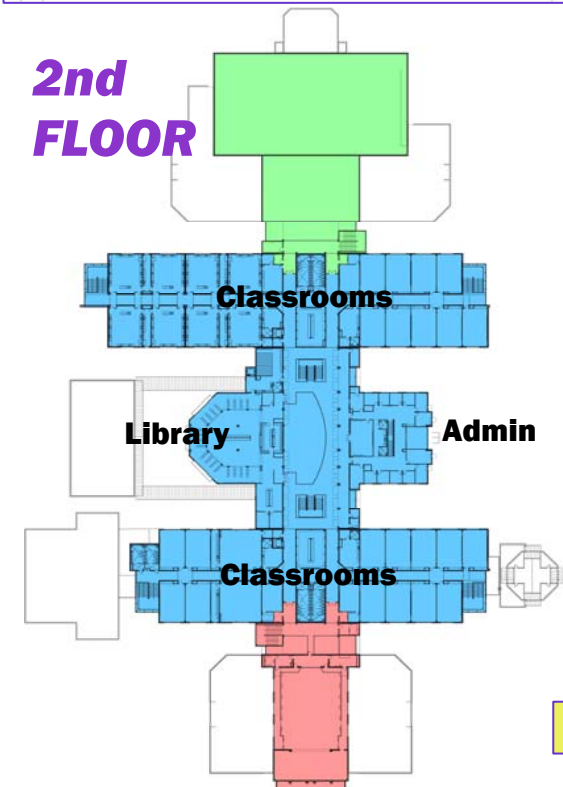


- Gymnasium
- Theater
- Classrooms & Other Facilities

1st FLOOR



2nd FLOOR



KEY FACTS:

- 9-12 Comprehensive High School
- All-under-one-roof design
- 45-Acre Site
- Approximately 250,000 square feet
- 78 Classrooms (including labs)
- Initial Capacity of 2,042 students, with master planned capacity of 2,798 students
- 4,000 seat Football Stadium
- Total Estimated Cost: \$124 Million



THEATER

