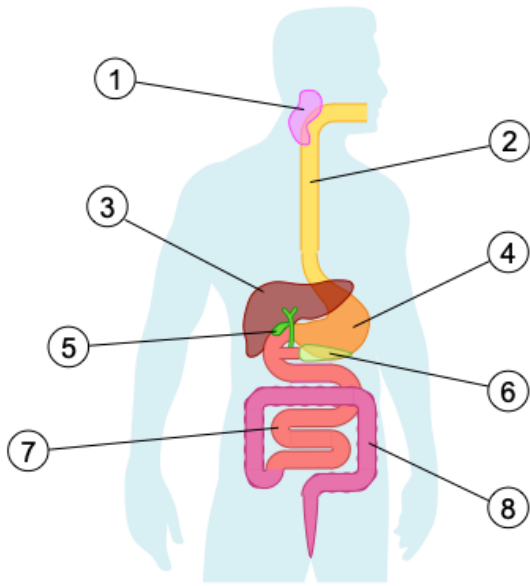


6.1 Digestion & Absorption

Digestion

Label the following diagram of the human digestive system



- 1.
- 2.
- 3.
- 4.
- 5.
- 6.
- 7.
- 8.

Outline the function of the following digestive organs

Stomach:

.....

Pancreas:

.....

Small Intestine:

.....

Large Intestine:

.....

Liver:

.....

Differentiate between chemical and mechanical digestion

.....

.....

.....

Complete the following table

Enzyme	Source	Substrate	Product	Optimal pH
(salivary) amylase				
pepsin (protease)				
(pancreatic) lipase				

Compare digestive movement via peristalsis and segmentation

Peristalsis:

.....

.....

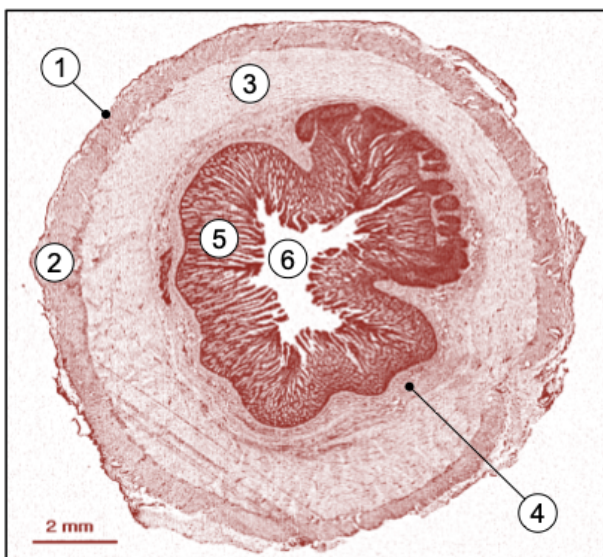
Segmentation:

.....

.....

Absorption

Label the tissue layers of the small intestine



- 1.
- 2.
- 3.
- 4.
- 5.
- 6.

What type of cross-section is this?

.....

Distinguish between absorption and assimilation

Absorption:

.....

Assimilation:

.....

With the aid of the diagram, explain how the structure of an intestinal villus relates to its role

.....

.....

.....

.....

.....

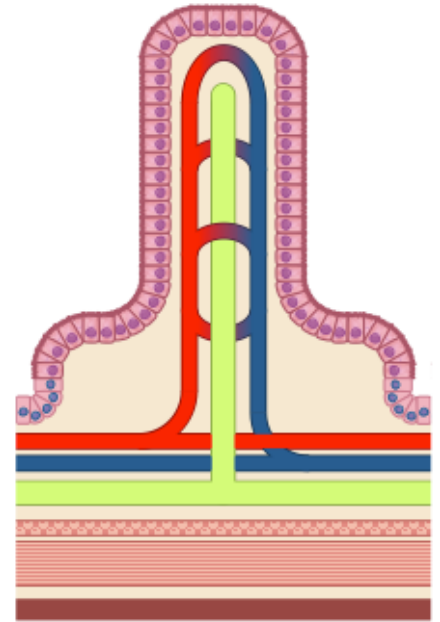
.....

.....

.....

.....

.....



Identify the different methods of membrane transport that may be used to absorb nutrients

.....

.....

.....

.....

Outline the digestion of starch (and subsequent transport of products)

.....

.....

.....

.....