

Maple Elementary School

Coffee with the Principal
Friday, September 3rd



What's
happening at
Maple?

¿Que esta
pasando en
Maple?

Temperature checks/Safety
Drills
Controles de temperatura/Simulacros de
Seguridad

Testing
Exámenes

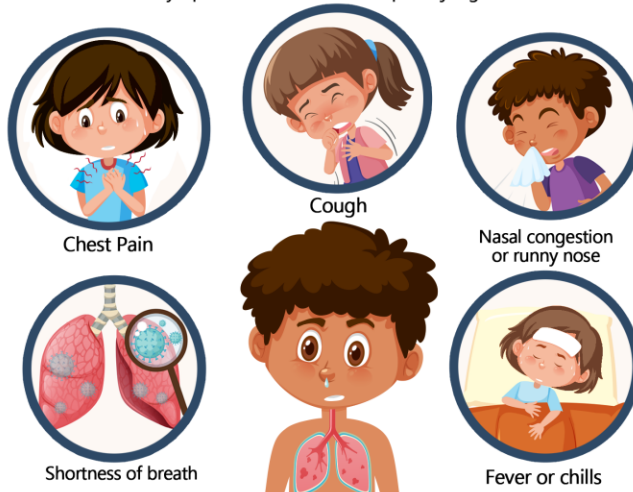
Parent Conferences-Virtual
10/18/21 – 10/22/21
Conferencias de Padres - Virtual

Lunches
Almuerzos

FONTANA UNIFIED SCHOOL DISTRICT COVID-19 Screening Flowchart



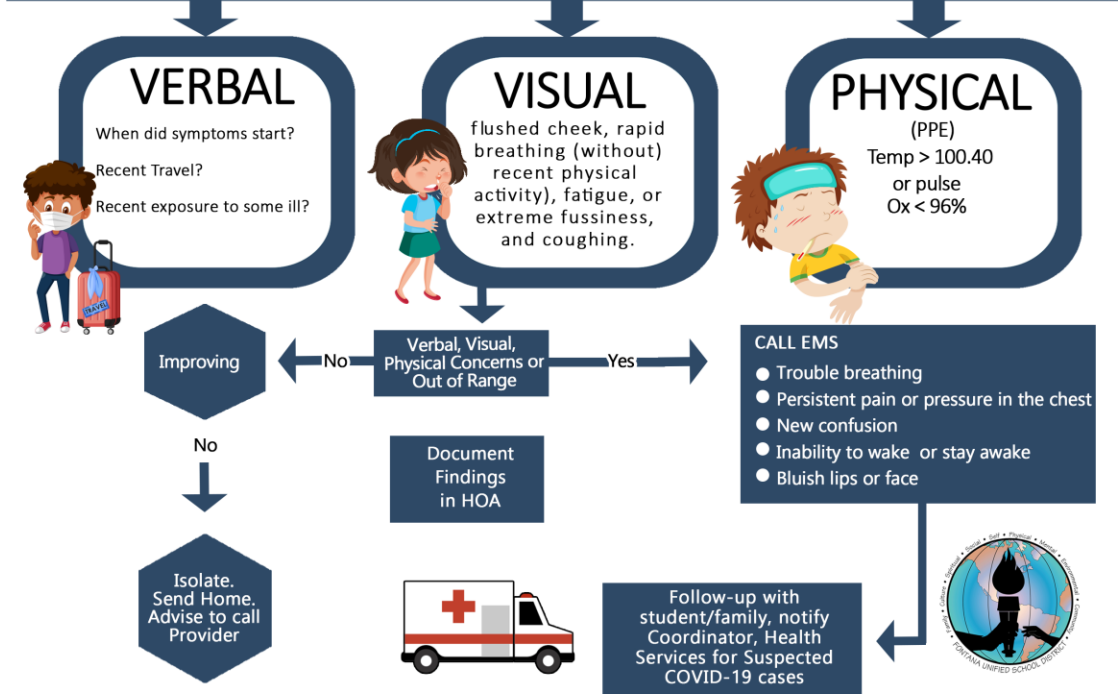
This flowchart will be used for health staff to provide guidance on students who may present to the school site with COVID-19 like symptoms. This does not replace judgment based on identified findings.



Pediatric patients with COVID-19 may experience the following signs or symptoms over the course of the disease:

- Sore throat
- Diarrhea
- Nausea or vomiting
- Fatigue
- Headache
- Muscle or body aches
- Poor feeding or poor appetite
- Rash
- Red eyes
- Cracked/swollen lips
- Red/swollen tongue
- Swelling hands/feet
- Stomach pain

Student is walked to COVID Care Room with staff. (masked) Health Staff assess student





Questions

Preguntas

