



Fontana Unified School District
**Solutions to Common Student Device Issues
for Remote Testing of MAP Growth**



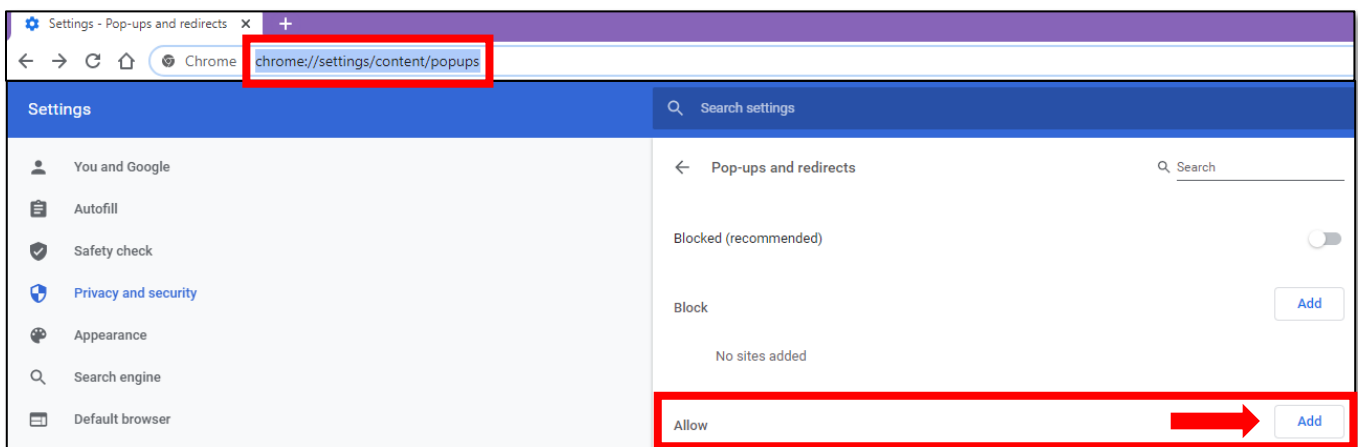
POP-UP BLOCKER

Before taking a MAP Growth test and using Google Chrome or Microsoft Edge, check the configuration of the FUSD device at <https://check.nwea.org/>. If a pop-up blocker error is detected, use the following steps to resolve the issue. For a screen resolution error, click [here](#) to be taken to the steps to fix the screen resolution issue.

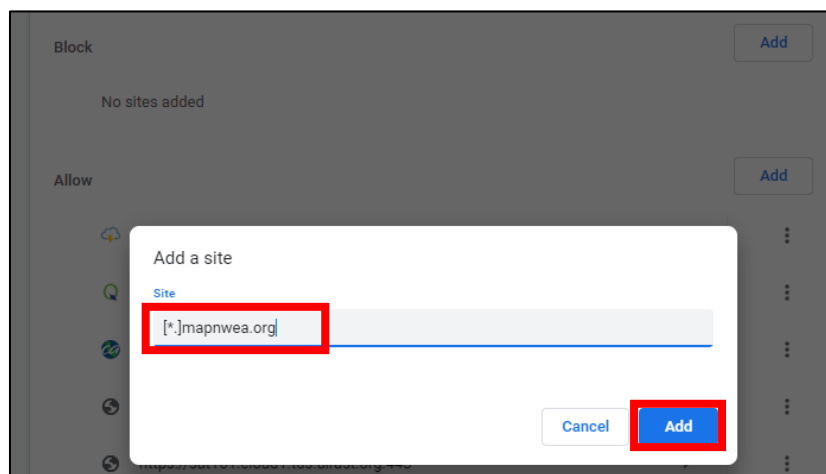
NOTE: If the FUSD device has an issue other than a pop-up blocker or screen resolution error, then please contact the Help Desk at 909-357-7630

GOOGLE CHROME - OPTION 1

STEP 1: In the address bar for Google Chrome, navigate to *chrome://settings/content/popups*, then click the **Add** button for the Allow list.



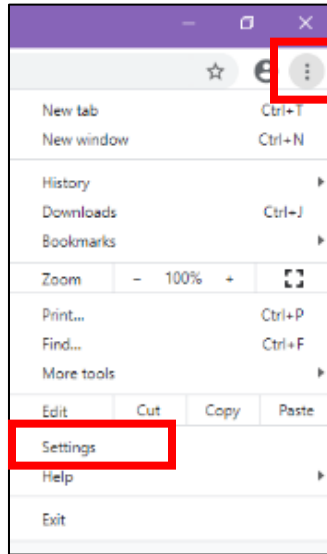
STEP 2: Type *[*.]mapnwea.org* into the field, then click the blue **Add** button.



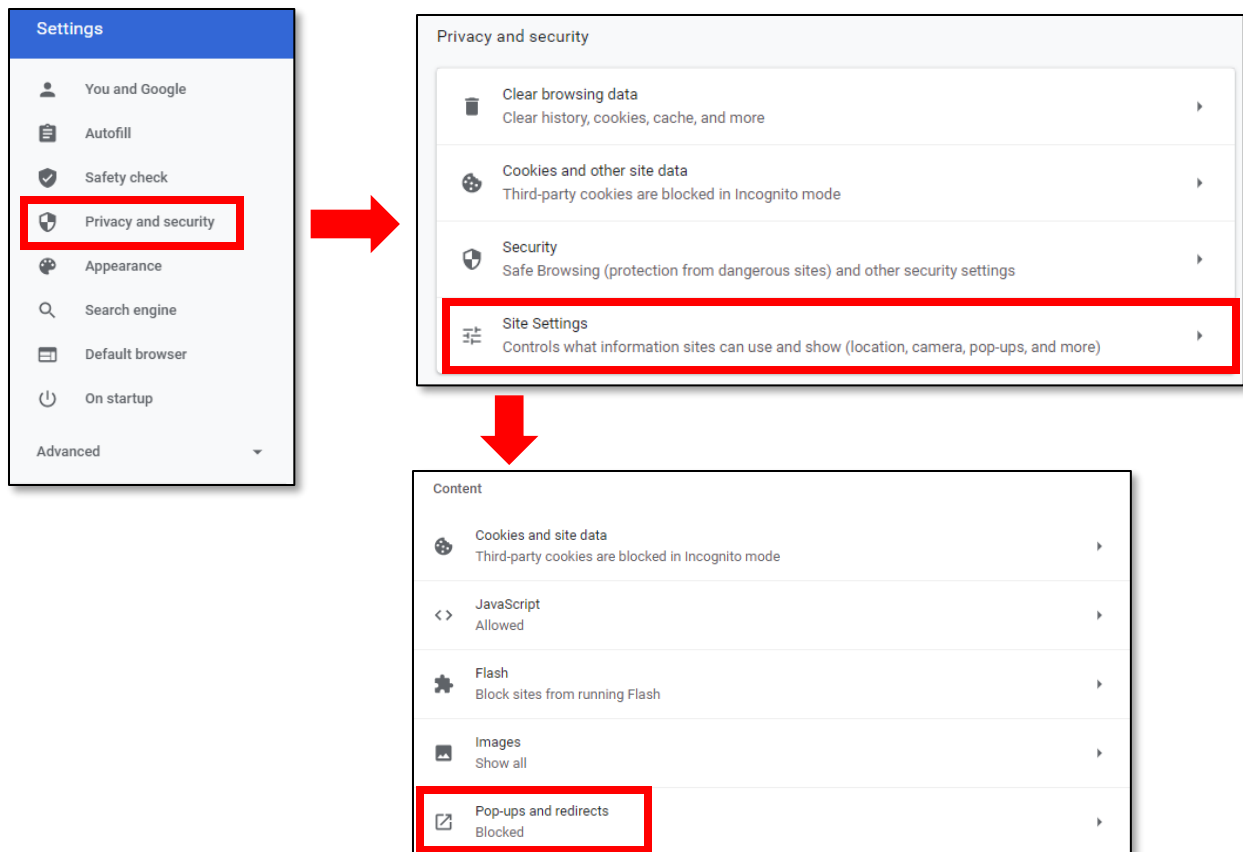
STEP 3: Recheck the configuration of the FUSD device at <https://check.nwea.org/>. The pop-up blocker issue on the device should now be resolved.

GOOGLE CHROME - OPTION 2

STEP 1: From Google Chrome, click the **Menu** icon to the right of the address bar (The icon is the three vertical dots.), then click **Settings**.

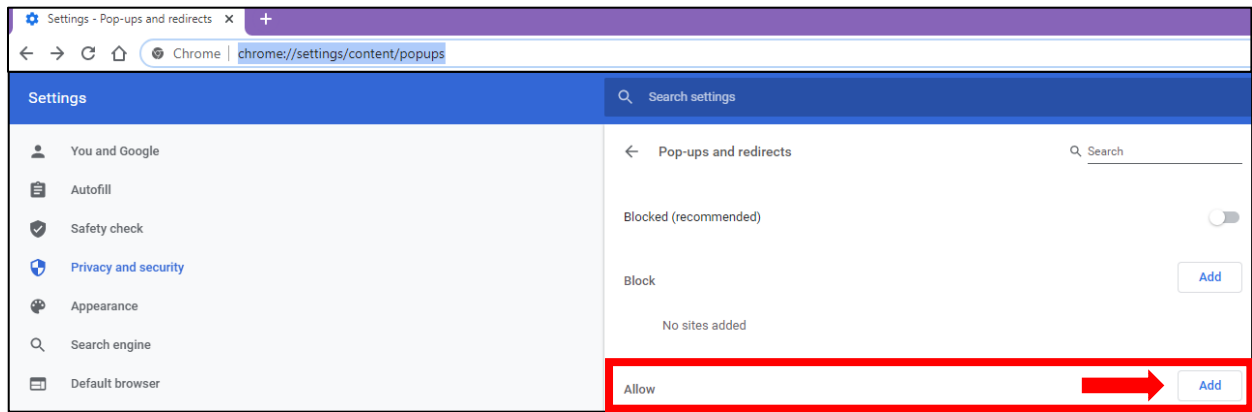


STEP 2: A) Click **Privacy and security**; B) Click **Site Settings**; C) Under the Content section, click **Pop-ups and redirects**.

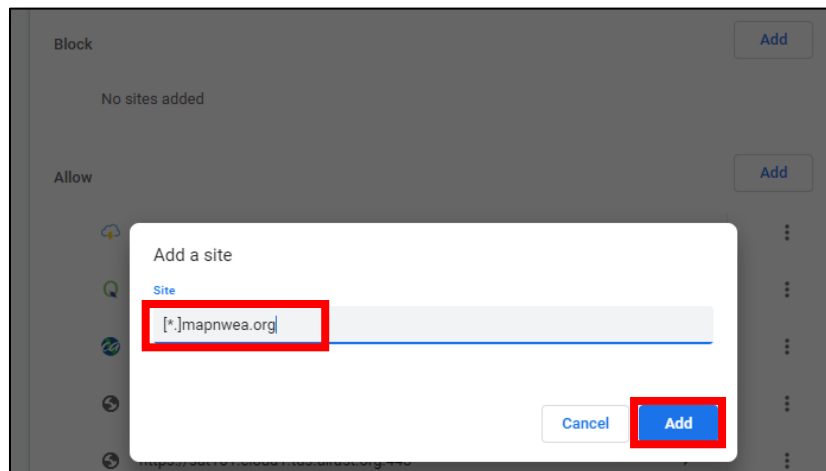


GOOGLE CHROME - Option 2 (continued)

STEP 3: Click the **Add** button for the Allow list.



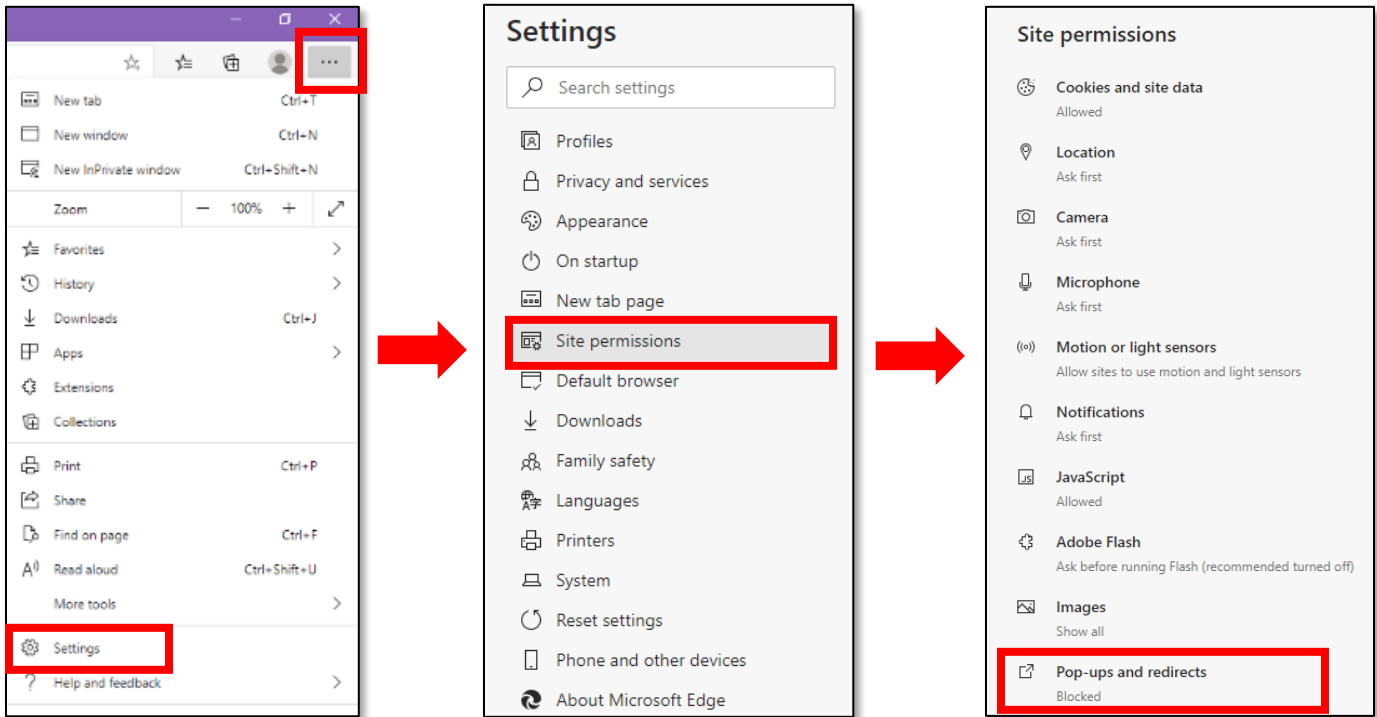
STEP 4: Type `[*].mapnwea.org` into the field, then click the blue **Add** button.



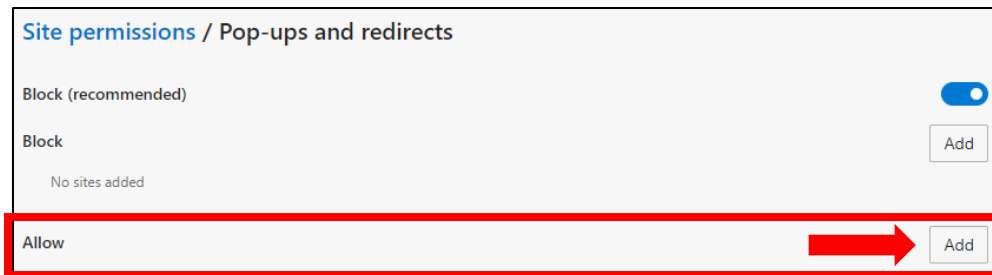
STEP 5: Recheck the configuration of the FUSD device at <https://check.nwea.org/>. The pop-up blocker issue on the device should now be resolved.

MICROSOFT EDGE

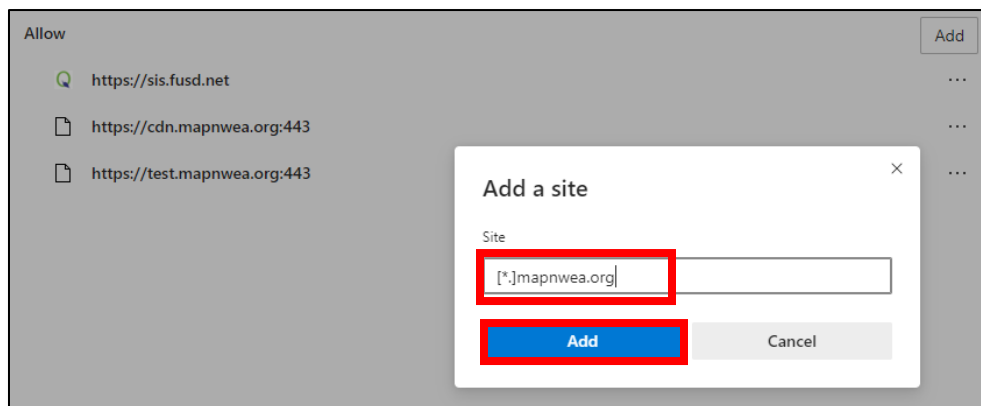
STEP 1: A) From Microsoft Edge, click the **Settings and more** icon to the right of the address bar (The icon is the three horizontal dots.), then click **Settings**; **B)** click **Site permissions**; **C)** click **Pop-ups and redirects**.



STEP 2: Click the **Add** button for the Allow list.



STEP 3: Type **[*.]mapnwea.org** into the field, then click the blue **Add** button.



STEP 4: Recheck the configuration of the FUSD device at <https://check.nwea.org/>. The pop-up blocker issue on the device should now be resolved.